



Self-Propelled Articulating Booms

Z™ -45/25J DC

Specifications

Models Z-45/25J DC

Measurements	Metric
Working height maximum*	15.94 m
Platform height maximum	13.94 m
Horizontal reach maximum	7.65 m
Up and over clearance maximum	7.24 m
A Platform length	0.76 m
B Platform width	1.83 m
C Height - stowed	2.00 m
D Length - stowed	6.83 m
E Width	1.79 m
A Wheelbase	2.03 m
A Ground clearance - center	0.24 m

Productivity

Lift capacity	227 kg
Platform rotation	160°
Vertical jib rotation	135°
Turntable rotation	355° non-continuous
Turntable tailswing	zero
Drive speed - stowed	4.8 km/h
Drive speed - raised**	1.0 km/h
Gradeability - stowed***	30%
Turning radius - inside	1.8 m
Turning radius - outside	4.27 m
Controls	24V DC proportional
Tires	9 x 14.5 in

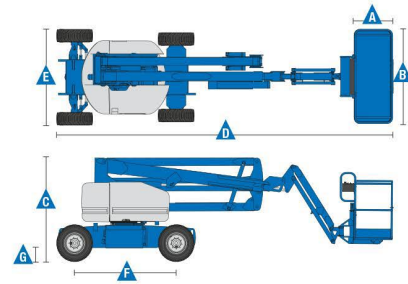
Power

Power source - DC 48V DC (eight 6 V batteries, 350 Ah capacity)

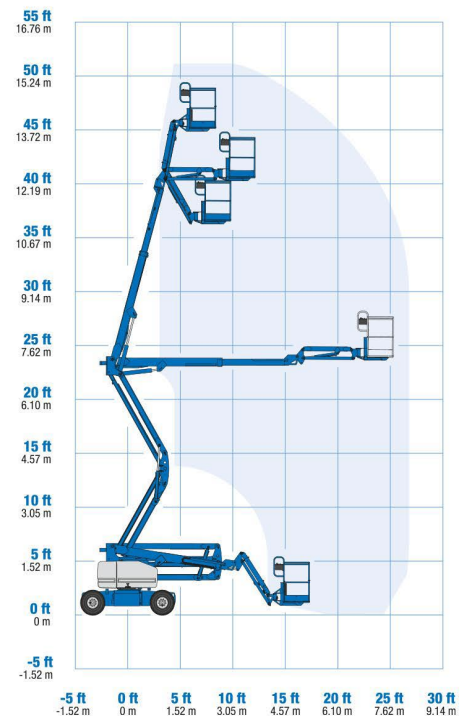
Auxiliary power unit	24V DC
Hydraulic tank capacity	30.3 L
Fuel tank capacity- Bi-Energy	34.1 L

Weight****

DC 7,394 kg



Range Of Motion Z-45/25J



Standards Compliance ANSI A92.5, CSA B354.4, EN 280, AS 1418.10

* The metric equivalent of working height adds 2 m to platform height. U.S. adds 6 ft to platform height.
 ** In lift mode (platform raised), the machine is designed to operate on firm, level surfaces only.
 *** Gradeability applies to driving on slopes. See operator's manual for details regarding slope ratings.
 **** Weight will vary depending on options and/or country standards.